



# Portsea Golf Club

M E M B E R S H I P

## 2011 – 2012

### Membership Information and Application

Rolph Avenue, Portsea Vic 3944

PO Box 215, Sorrento Vic 3943

Phone: (03) 5984 3521

Fax: (03) 5984 3422

Pro Shop: (03) 5984 2909

Email: [office@portseagolf.com.au](mailto:office@portseagolf.com.au)

[www.portseagolf.com.au](http://www.portseagolf.com.au)

# Membership Information



## HISTORY

Club origins date back to 1923 when approximately 90 acres were set aside by the Portsea Lands Company and design of a preliminary nine hole layout commenced. Club founder Arthur W. Relph identified that the natural undulating landscape and sandy soils provided the unique characteristics required for a golf course. Indeed, world renowned golf course architect Alister MacKenzie said that “The finest golf courses in existence are natural ones.”

The links first opened for play in December 1924. A tenth hole was added in 1926 and by the end of the 1920's the course consisted of eleven holes, and clubhouse construction was under way. A further two holes were added in 1930, another one in 1934, two in 1955 and finally in 1965 the course was extended to eighteen holes.

Today members enjoy playing on a course which consistently rates as one of Australia's finest. Portsea is renowned for its friendly atmosphere, and the clubhouse facilities provide ideal surroundings for the relaxation and enjoyment of members and guests.

## GOLF COURSE

Set amongst rolling sand dunes and coastal vegetation with spectacular views across Port Phillip Bay, the 18 hole, 5973 metres par 72 layout is consistently ranked in the Top 50 golf courses in Australia.

A number of recent design improvements combined with strategic bunkering, undulating Santa Ana couch fairways and slick greens make Portsea an enjoyable challenge for golfers of all standards.

## REDEVELOPMENT

Portsea Golf Club is about to embark on the most exciting project in its history. The project will involve the development of an existing 21 lot sub-division along Relph Avenue, construction of a new clubhouse near the current 6th tee, associated golf course design modifications and a water resource management plan for the course.

The entire project is golf course driven and will ensure Portsea continues to enhance its prominence in Australia, whilst providing members with a modern clubhouse facility with sweeping views of the course and Port Phillip Bay.

## TOURNAMENTS & EVENTS

Portsea has played host to a number of prestigious amateur and professional events throughout its history including the Victorian Open, Australian Interstate Teams Championship, Victorian Amateur Championship and its own Portsea Open Amateur. Without doubt the most famous tournament on the Club's golfing calendar is the Portsea Pro - Am. Held on 2 January each year, it attracts a class field of professionals, amateurs and celebrities. Past winners have included British Open winners Peter Thomson and Ian Baker-Finch as well as Australian Open champions Bob Shearer and Stephen Allan. Peter Thomson regards Portsea very highly and has referred to the course as 'One to play at every opportunity. Portsea stimulates me because it is in every way a champion's course.'

## GOLF COMPETITIONS

The Club conducts weekly golf competitions for Men on Tuesday, Thursday and Saturday and for Women on Wednesday, Thursday and Saturday. In addition, mixed events are held once a month on Sunday, a 9 hole twilight competition on Friday afternoons during daylight saving, and various other golfing competitions are held throughout the year.

## MEMBERS CLUBHOUSE

The clubhouse is open each day from 10 am for all members to enjoy the relaxing environment. Make a selection from our wide variety of light meals and snacks on the clubhouse menu or relax with a drink from our fully stocked bar whilst enjoying the spectacular view over the course from the clubhouse.

## RECIPROCAL GOLF CLUBS

Following is a list of Golf Clubs with whom we have reciprocal arrangements. Most arrangements are for full playing rights and it is recommended that members make use of this amenity when travelling.

**Victoria:** Horsham, Lakes Entrance, Murray Downs, Warrnambool

**Australian Capital Territory:** Federal

**New South Wales:** Cobram-Barooga, Narooma, Newcastle, Pambula-Merimbula, St Michael's (Sydney)

**Queensland:** Brisbane, Half Moon Bay (Cairns), Headland (Sunshine Coast), Robina Woods (Gold Coast)

**Northern Territory:** Darwin

**Tasmania:** Launceston, Tasmania (Hobart)

**Western Australia:** Royal Fremantle, Western Australian

**South Australia:** The Grange (Adelaide), Victor Harbour

**New Zealand:** Paraparaumu Beach (near Wellington)

**United Kingdom:** Blairgowrie (Scotland)

## MEMBERSHIP APPLICATION

Applications for Membership should be made by completing the attached form and returning it to the Club with the required deposit. The Club will promptly confirm receipt of your application and invite you to attend the next scheduled membership meeting, which takes place once a month.

The Club's membership and financial year is from 1 July to 30 June. New members joining throughout the year are charged on a pro-rata basis for the subscription component of the membership fees. All membership fees must be paid within 30 days from the date of invoice. Membership deposits will be deducted from the entrance fee.

Play on the course as a member is only available after paying all applicable fees and attending a membership induction meeting.

Feel free to contact the Club for further information on joining Portsea Golf Club, or visit our website at [www.portseagolf.com.au](http://www.portseagolf.com.au)

*We look forward to hearing from you soon.*

## GENERAL MEMBERSHIP CATEGORIES

	Annual Subscription	Entrance Fee	Please indicate category
<b>Ordinary – Full 7 Day Membership</b> Access to course and clubhouse 7 days	<b>\$2247</b>	<b>\$1000</b>	
<b>Entry Level – 6 Day Membership plus Restricted Saturdays</b> Access to course 6 days per week (Sunday - Friday) plus 7 day access from 1 May - 24 December inclusive (Saturday access not available from 26 Dec - 30 April) Access to clubhouse 7 days	<b>\$1872</b>	<b>\$1000</b>	
<b>Intermediate – 6 Day Membership</b> Access to course 6 days (Sunday to Friday inclusive) except on public holidays. Access to clubhouse 7 days	<b>\$1699</b>	<b>\$1000</b>	
<b>Weekday – 5 Day Membership</b> Access to course 5 days (Monday to Friday inclusive) except on public holidays. Access to clubhouse 7 days	<b>\$1274</b>	<b>\$1000</b>	

## AGE-BASED MEMBERSHIP CATEGORIES

<b>Ordinary – Full 7 Day Membership</b> Access to course and clubhouse 7 days			
<ul style="list-style-type: none"> <li>• <b>Age 25 – 30 years</b></li> <li>• <b>Age 21 – 24 years</b></li> <li>• <b>Age 18 – 20 years</b></li> </ul>	<p><b>\$1378</b></p> <p><b>\$841</b></p> <p><b>\$580</b></p>	<p><b>\$1000</b></p> <p><b>\$750</b></p> <p><b>\$750</b></p>	
<b>Junior</b> Access to course 6 days a week (Sunday to Friday inclusive). Saturday playing rights at discretion of Match Committee Access to clubhouse 7 days a week.			
<ul style="list-style-type: none"> <li>• <b>15 to 18 years</b></li> <li>• <b>13 to 15 years</b></li> <li>• <b>Under 13 years</b></li> </ul>	<p><b>\$130</b></p> <p><b>\$88</b></p> <p><b>\$72</b></p>	<p><b>NIL</b></p> <p><b>NIL</b></p> <p><b>NIL</b></p>	
<b>Social Membership</b> Access to clubhouse 7 days a week. No voting rights.	<b>\$61</b>		

## NOTES

- Annual subscriptions include: Capital/Water levy, Insurance, Affiliation fees and GST, Bar Levy additional charge - \$250 for Ordinary, Entry Level and Age 25-30; \$200 for Intermediate and Weekday; Nil for Junior and age 18-24

Ask the Club Office for details of the following:

- Quarterly or Half Yearly Payment Plans for Annual Subscriptions
- Entrance Fee instalment payments
- Family Membershp

## 2010 / 2011 ANNUAL PLAYING RIGHTS

The Club also provides a range of Annual Playing Rights options for golfers seeking a less costly alternative to Membership. You choose which days of the week you wish to play (Monday is compulsory with other days optional) and pay accordingly. As well, there is no Entrance Fee. Naturally there are some restrictions, which are explained in the notes below.

*Annual Subscription*    *Please indicate categories*

<b>Base Membership – Monday</b> Access to course Mondays only	<b>\$537</b>	
<b>Optional Extra Days</b>	<b>\$295</b>	
<b>Tuesday</b> Access to course Tuesdays only	<b>\$295</b>	
<b>Wednesday</b> Access to course Wednesdays only	<b>\$295</b>	
<b>Thursday</b> Access to course Thursdays only	<b>\$295</b>	
<b>Friday</b> Access to course Fridays only.	<b>\$295</b>	
<b>Saturday – Not Available</b>		
<b>Sunday</b> Access to course Sundays only	<b>\$384</b>	

## EXAMPLE

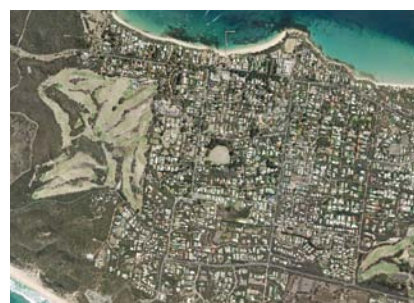
Monday, Tuesday & Thursday - \$537.00 (Compulsory) + \$295.00 (Tuesday) + \$295.00 (Thursday) = \$1127.00

## NOTES

- Annual Subscription includes: Insurance, Affiliation fees, GST, Bar levy of \$150 extra

Annual Playing Rights:

- Playing rights are restricted to Compulsory Base Day (Monday) and other days as selected,
- Playing rights not valid from 26 December - 8 January (inclusive) or Public Holidays.
- Full rights to the Clubhouse on any day of the week.
- No voting rights.
- No reciprocal club rights.
- Playing rights valid 12 months only (1 July 2010 - 30 June 2011) and subject to annual review by the Club Committee.
- Ineligible for Board Events, Major Trophies, Monthly Medals and Club Representation.





## A - PERSONAL DETAILS

First Name	Surname	
Preferred First Name	Date of Birth	
Postal Address	Postcode	
Telephone - Home	Mobile	Email
Emergency Contact Name & Phone No		
Occupation	Employer	
Telephone No	Business Fax No.	

Golf Australia requires the information requested above for the purposes of GOLF Link. Your personal information will only be used in accordance with the GOLF Link Activities and to provide you with GOLF Link services. If the requested information is not provided to Golf Australia you may not be able to obtain GOLF Link services including an official Australian handicap. If you wish, you can access your personal information through Golf Australia upon reasonable notice.

## B - GOLF HISTORY

Please tick  Beginner  Occasional / Social Golfer  Experienced Golfer

Current Golf Club Membership Details	Handicap	GolfLink No
Any previous Golf Club Membership Details	Last Handicap	

## C - REFEREES (REFEREES NEED NOT BE MEMBERS OF PORTSEA GOLF CLUB)

Please provide details of TWO Referees in BLOCK LETTERS.

Name & Address \_\_\_\_\_

Name & Address \_\_\_\_\_

## D - PROPOSERS (MUST BE MEMBERS OF PORTSEA GOLF CLUB AND KNOW THE APPLICANT )

We consider the applicant to be a suitable person for election as a Member of Portsea Golf Club

Name of Proposer	Signature
BLOCK LETTERS	
Name of Proposer	Signature
BLOCK LETTERS	

## E - DECLARATION OF APPLICANT

If accepted as a Member by the Committee of Management, I agree to abide by the Rules as laid down in the Memorandum and Articles of Association and the By-Laws in force or those that may be decreed in the future by the Board of Directors.

Name of Proposer	Signature
BLOCK LETTERS	
Date	/ /

Please forward completed application together with a non-refundable deposit of \$150 (\$50 Junior) to Portsea Golf Club, PO Box 215, Sorrento 3943. The Club will promptly confirm receipt of your application and invite you to attend the next scheduled membership meeting. Play is only available after attending a Membership Induction Meeting and paying all applicable fees.



*Office Use Only:*

**MEMBER INDUCTION CHECKLIST**

Membership No: \_\_\_\_\_

Application Received: \_\_\_\_\_

Membership Category Requested: \_\_\_\_\_

Details on Waiting List: \_\_\_\_\_

Invite to Meeting Sent: \_\_\_\_\_

Committee Meeting: \_\_\_\_\_

Put on Notice Board: \_\_\_\_\_

Entered on to Computer: \_\_\_\_\_

Invoiced: \_\_\_\_\_

Approved: \_\_\_\_\_

**NOTES:**